

2023



SPARCOTM

SPORT

EXPLORE

RIDE







SPYKE 2023

SPORT RACE

RACE 1PC LEATHER SUITS

- 9 **ARAGON RACE**
110102
- 11 **ASSEN RACE 2.0**
110162
- 14 **ESTORIL RACE**
110156
- 15 **ASSEN SPORT 2.0**
110261
- 16 **ESTORIL SPORT**
110252

SPORT STREET

STREET LEATHER JACKETS

- 21 **MONZA EVO**
110312
- 22 **ARAGONEVO**
110310
- 23 **ESTORIL EVO**
110320
- 26 **IMOLA EVO 2.0**
110363
- 27 **IMOLA EVO 2.0 LADY**
110364

STREET LEATHER PANTS

- 28 **MISANOR SPANTS**
110418

STREET DRY TECNO JACKETS

- 30 **ARAGON GT DRY TECNO**
120630
- 33 **ESTORIL GT DRY TECNO**
120631

STREET JACKETS

- 34 **ESTORIL GT**
120632

SPORT GLOVES

RACE GLOVES

- 37 **TECHPRO**
130964
- 39 **TECH RACE**
130965

STREET GLOVES

- 40 **TECH SPORT VENTED 2.0**
130969
- 41 **TECH SPORT LADY 2.0**
130970
- 43 **TECH SHORT 2.0**
130971

EXPLORE TOUR

DRY TECNO TOURING JACKET

- 47 **ARTICA DRY TECNO**
120541
- 50 **SAHARA VENTED**
120543
- 52 **EQUATOR DRY TECNO**
120520
- 53 **EQUATOR DRY TECNO LADY**
120530
- 55 **COMPASS DRY TECNO**
120542
- 56 **COMPASS DRY TECNO LADY**
120552

VENTED TOURING JACKET

- 58 **AIRMASTER**
120650
- 59 **AIRMASTER LADY**
120651
- 60 **LEVANTE**
120652
- 61 **LUFT MAN 2.0**
120687

DRY TECNO TOURING PANTS

- 62 **ARTICA DRY TECNO PANTS**
120745
- 63 **SAHARA VENTED PANTS**
120748
- 64 **EQUATOR DRY TECNO PANTS**
120720
- 65 **EQUATOR DRY TECNO PANTS LADY**
120730
- 66 **COMPASS DRY TECNO PANTS**
120746
- 67 **COMPASS DRY TECNO PANTS LADY**
120744
- 69 **BREVA DRY TECNO**
120726

EXPLORE ADVENTURE

ADVENTURE JACKETS

- 71 **NAMIB XTR JACKET**
120633

ADVENTURE PANTS

- 73 **NAMIB XTR PANTS**
120743

EXPLORE GLOVES

DRY TECNO TOURING GLOVES

- 75 **LATITUDE DRY TECNO**
131040
- 76 **TOURING 2 DRY TECNO**
131032
- 77 **TOURING 2 DRY TECNO LADY**
131036
- 80 **STOCKHOLM**
131046
- 81 **COMMUTER DRY TECNO**
131042

ADVENTURE GLOVES

- 82 **NAMIB GLV**
131045

RIDE ICON

LEATHER JACKETS

- 87 **MILANO 2.0**
110344
- 89 **MILANO 2.0 LADY**
110345
- 91 **SUBURRA**
110365

TEXTILE JACKETS

- 92 **PARIS**
170611
 - 94 **BARCELONA**
170608
 - 95 **LONDON**
170610
- ### DENIM
- 98 **RIDER**
160700
 - 99 **BETTY**
160701

RIDE GLOVES

GLOVES

- 101 **BIARRITZ DRY TECNO**
131018
- 102 **BIARRITZ**
131016
- 104 **BIARRITZ VENTED 2.0**
131019

RIDE URBAN

TEXTILE JACKETS

- 109 **HIKER**
120623

CASUAL WEAR

TEXTILE

- 111 **SPYKE DKR T-SHIRT**
180104
- 112 **SPYKE DKR T-SHIRT LONG SLEEVE**
180303
- 113 **SPYKE DKR HOODIE**
180404
- 114 **VALVE DKR HEAT**
120622

ACCESSORIES

ACCESSORIES

- 117 **LEG BAG**
142001
- 118 **AQUA**
142002
- 119 **AERO**
142003
- 120 **URBEX**
142004
- 121 **MONSOON RAIN JACKET**
150000
- 122 **MONSOON RAIN PANTS**
150004
- 123 **CLOTHES COVER**
150001
- 124 **MOTORCYCLE COVER**
150003

PROTECTORS

- 127 **PROTECTORS**

128-133 **TECH FEATURES | ICONS | SIZE CHART**

- 134 **INDEX**

**SPORT
RACE**

ARAGON RACE

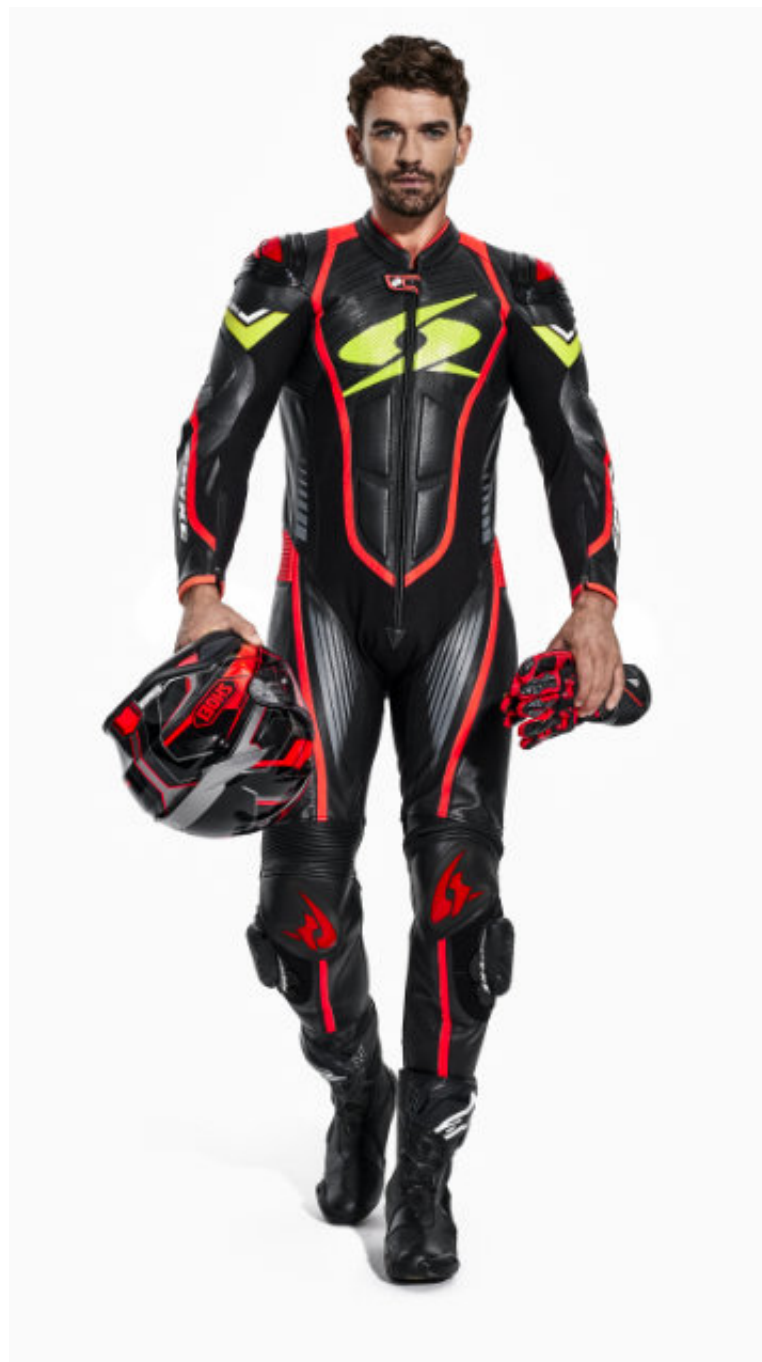
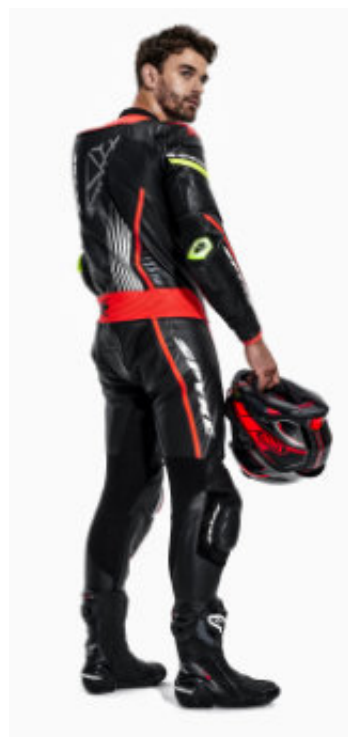
110102

42 44 46 48 50 52 54 56 58 60 62

DETAILS



BACK



COLOR OPTIONS



10000



10166



10135



10119



10409



10165

Technical Solutions

Kangaroo leather inserts. Stretch fabric for a better fit. Perforated leather panels on chest, back, sleeves, and thighs for better air ventilation. Racing back hump for improved aerodynamic performance with a pocket to insert a hydro pack. Racing-shaped sleeves. To increase the freedom of movement accordion baffles at the elbow, knee, and back. Zip fastener on sleeves and bottom of legs with auto lock functionality. Neoprene at collar for sweat absorption. Removable poly-mesh lining. External SPYKE logo shoulder and knee protectors. Removable elbow and knee sliders. Pocket for CE back protector level 2. Antishock side paddings at back. Internal pocket for documents. CE shoulder, elbow, hip, and knee protectors CE-approved according to PN EN 1621-1:2012. Stitching: safety seams construction according to EN 17092:2020 standard. Sliders included.

Special features

ZERO BLACK							

Materials

Water repellent 1,2/1,3mm cow leather. Water repellent 0,9/1mm kangaroo leather. Stretch fiber inserts. X-STRETCH fabric on shoulders, arms and sides. Removable inner poly-mesh lining with stretch zones.

SPYKE™
ASSEN RACE 2.0



RACE 1PC LEATHER SUITS

ASSEN RACE20

110162

42 44 46 48 50 52 54 56 58 60 62

DETAILS



BACK



COLOR OPTIONS



10165



10102



10201



10232

Technical Solutions

Premium cow hide outer shell construction. Stretch fabric for nice fit. Perforated leather panels on chest, back, sleeves and thighs for better air ventilation. Racing back hump for improved aerodynamic performance. Neoprene at collar for sweat absorption. To increase the freedom of movements accordion baffles at elbow, knee and back. Racing- shaped sleeves. Antishock side paddings. Zip fastener on sleeves and bottom of legs with auto lock functionality. Neoprene ankle and wrist cuffs. External interchangeable SPYKE logo shoulder protectors with TEPEX. Removable elbow and knee sliders. Shoulder, elbow and knee protectors CE-approved according to PN EN 1621-1:2012. Pocket for CE back protector level 2. Stitching: safety seams construction according to EN 17092:2020 standard. Sliders included.

Special features

Materials

Water repellent 1,2/1,3mm cow leather. Stretch fiber inserts. X-STRETCH fabric on shoulders, arms and sides. Inside fixed poly-mesh lining with stretch zones

SPYKE™
ARAGON RACE



SPYKE™
ASSEN RACE 2.0



ESTORIL RACE
T10156

- 42
- 44
- 46
- 48
- 50
- 52
- 54
- 56
- 58
- 60
- 62



BACK



DETAILS



COLOR OPTIONS



10000



10166



10165



10108



10119



10135

Special features

Materials

Water repellent 1,2/1,3mm buffalo leather. Stretch fiber inserts. X-STRETCH fabric on shoulders, arms and sides. Removable inner poly-mesh lining with stretch zones.

Technical Solutions

Premium buffalo leather. Stretch fabric for a better fit. Perforated leather panels on chest, back, sleeves, and thighs for better air ventilation. Racing back hump for improved aerodynamic performance. Racing-shaped sleeves. To increase the freedom of movement accordion baffles at the elbow, knee, and back. Zip fastener on sleeves and bottom of legs with auto lock functionality. External SPYKE logo shoulder and knee protectors. Removable knee sliders. Neoprene ankle and wrist cuffs. Removable lining. One internal pocket. Shoulder, elbow, hip and knee protectors CE-approved according to PN EN 1621-1:2012. Pocket for CE back protector level 2. Stitching: safety seams construction according to EN 17092:2020 standard. Sliders included.

ASSEN SPORT 2.0

110261

42 44 46 48 50 52 54 56 58 60 62

DETAILS

BACK



10102



10107



10232

Technical Solutions

Shoulder, elbow and knee protectors CE- approved according to PN EN 1621-1:2012. Back pocket for CE back protector level 2. External interchangeable SPYKE logo shoulder protectors with TEPEX. Antishock side paddings. Stitching: safety seams construction according to EN 17092:2020 standard. Perforated leather on front, back, sleeves and legs for air ventilation. Racing back hump for improved aerodynamic performance. Racing -shaped sleeves. Accordion baffles at elbow, knee and back for easy movement. Zip fastener on sleeves and bottom legs with "flat lock" system (autolocking & anti-floating slider). Neoprene ankle and wrist cuffs. Neoprene at collar for sweat absorption. Stretch fabric for nice fit. 2 inner pockets. Removable knee sliders. Sliders included. Connecting zipper.

Special features



Materials

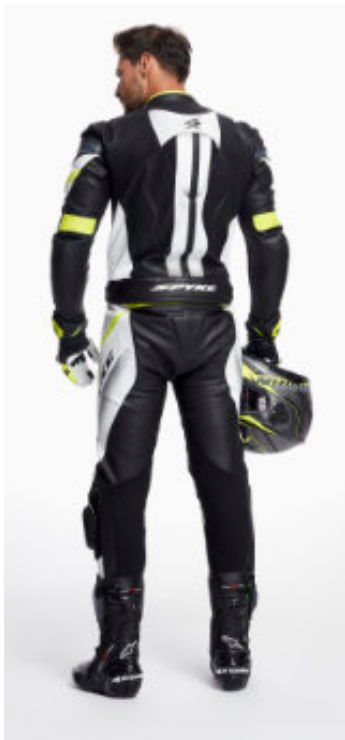
Water repellent 1,2/1,3mm cow leather. Stretch fiber inserts. X-STRETCH fabric on shoulders, arms and sides. Inside fixed poly-mesh lining with stretch zones.

ESTORILSPORT
T10252

- 42
- 44
- 46
- 48
- 50
- 52
- 54
- 56
- 58
- 60
- 62



BACK



DETAILS



COLOR OPTIONS



10000



10135



10119



10121

Special features

Materials

Water repellent 1,2/1,3mm buffalo leather. Stretch fiber inserts. X-STRETCH fabric on shoulders, arms and sides. Removable inside poly-mesh lining with stretch zones.

Technical Solutions

This 2-pieces suit connected by a zipper gives you an opportunity to use the jacket and pants together or separately. Stretch fabric for nice fit. External SPYKE logo shoulder protectors. Perforated leather panels on chest, back, sleeves and thighs for better air ventilation. To increase the freedom of movements accordion baffle at elbow, knee and back. Racing back hump for improved aerodynamic performance. Zip fastener on sleeves and bottom of pants with auto lock functionality. Racing - shaped sleeves. Strap and velcro waist adjustment. Neoprene ankle and wrist cuffs. Removable elbow and knee sliders included. One internal pocket for documents. Shoulder, elbow, hip and knee protectors CE-approved according to PN EN 1621-1:2012. Pocket for CE back protector level 2. Stitching: safety seams construction according to EN 17092:2020 standard.

SPYKE™
ESTORIL SPORT



**SPORT
STREET**



SPYKE™
MONZA EVO

SPYKE™
MONZA EVO



MONZA EVO

110312

42 44 46 48 50 52 54 56 58 60 62

DETAILS



BACK



COLOR OPTIONS



10101

10164

10135

Technical Solutions

Shoulder and elbow protectors CE-approved according PN EN 1621-1:2012. Back pocket for CE back protector level 2. Outer, interchangeable elbow slider. External SPYKE logo shoulder protectors. Stitching: safety seams construction according to EN 17092:2020 standard. Premium cow hide outer shell construction. X-STRETCH panels on sides and inner sleeves. Racing back hump for improved aerodynamic performance. Racing-shaped sleeves. Accordion inserts on elbow and back. Auto lock zippers on sleeves. 2 outer pockets. Perforated leather panels for air ventilation. Waist adjustment with strap and velcro. Thermal removable quilt liner with mobile and document pocket. 1 inner pocket. Connecting zipper.

Special features



Materials

2 in 1 jacket. Soft-Touch 0,9/1,0 mm cow leather. Stretch fiber inserts. X-STRETCH fabric on shoulders, arms and sides. Inside fixed poly-mesh lining with stretch zones. Removable inner thermal polyester and polyamide padding.

ARAGONEVO
110310

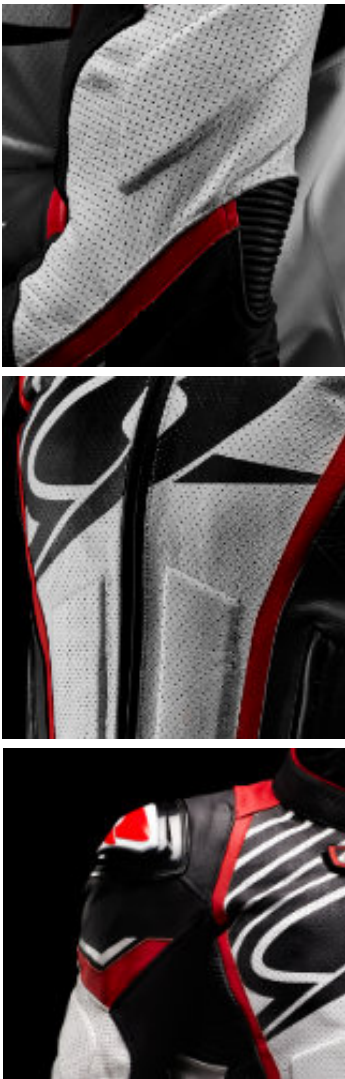
- 42
- 44
- 46
- 48
- 50
- 52
- 54
- 56
- 58
- 60
- 62



BACK



DETAILS



COLOR OPTIONS



Special features

Materials

2 in 1 jacket. Soft-Touch 0,9/1,0 mm cow leather. Stretch fiber inserts. X-STRETCH fabric on shoulders, arms and sides. Inside fixed poly-mesh lining with stretch zones. Removable interior thermal polyester and polyamide padding.

Technical Solutions

Shoulder and elbow protectors CE-approved according to PN EN 1621-1:2012. At back pocket for CE back protector level 2. Outer, interchangeable elbow slider. External SPYKE logo shoulder protectors. Stitching: safety seams construction according to EN 17092:2020 standard. Premium cow hide outer shell construction. X-STRETCH panels on sides and inner sleeves. Racing back hump for improved aerodynamic performance. Racing -shaped sleeves. Accordion inserts on elbow and back. Auto lock zippers on sleeves. 2 outer pockets. Perforated leather panels for air ventilation. Waist adjustment with strap and velcro. Thermal removable quilt liner with mobile and document pocket. 1 inner pocket. Connecting zipper.

ESTORIL EVO

110320

42 44 46 48 50 52 54 56 58 60 62

DETAILS

BACK



COLOR OPTIONS



10000



10134

Technical Solutions

Shoulder and elbow protectors CE-approved according PN EN 1621-1:2012. Back pocket for CE back protector level 2. External SPYKE logo shoulder protectors. Stitching: safety seams construction according to EN 17092:2020 standard. Racing back hump for improved aerodynamic performance. X-STRETCH panels on sides and inner sleeves. Racing-shaped sleeves. Accordion inserts on elbow and back. Auto lock zippers on sleeves. Neoprene wrist cuffs. 2 outer pockets. Perforated areas front, back and sleeves for air ventilation. Bottom adjustment with strap and velcro. Thermal removable quilt liner with mobile and document pocket. Connecting zipper.

Special features

Materials

2 in 1 jacket. Soft-Touch 0,9/1,0 mm buffalo leather. Stretch fiber inserts. X-STRETCH fabric on shoulders, arms and sides. Inside fixed poly-mesh lining with stretch zones. Removable interior thermal polyester and polyamide padding.

SPYKE™
IMOLA EVO 2.0



SPYKE™
IMOLA EVO 2.0 LADY



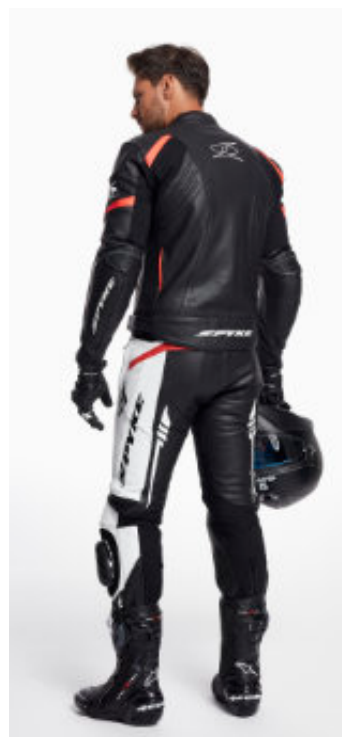
IMOLA EVO 2.0

T10363

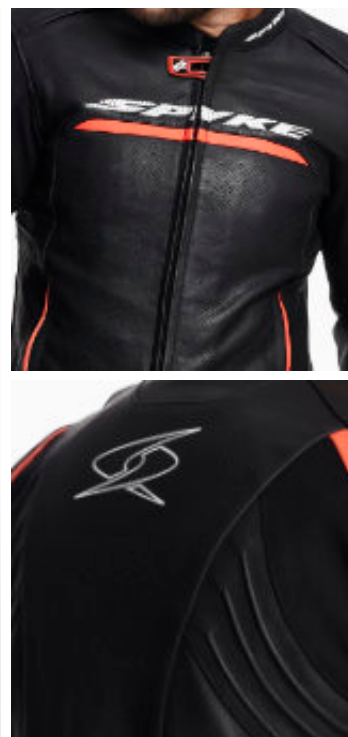
42 44 46 48 50 52 54 56 58 60 62



BACK



DETAILS



COLOR OPTIONS



Special features



Materials

2 in 1 jacket. Soft-Touch 0,9/1,0 mm cow leather. Stretch fiber inserts. X-STRETCH fabric on shoulders, arms and sides. Inside fixed poly-mesh lining with stretch zones. Removable inner thermal polyester and polyamide padding.

Technical Solutions

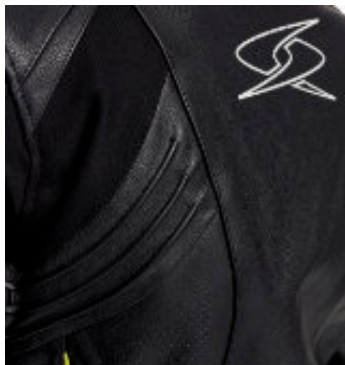
Shoulder and elbow protectors CE-approved according to PN EN 1621-1:2012. Back pocket for CE back protector level 2. Stitching: safety seams construction according to EN 17092:2020 standard. Premium cow hide outer shell construction. X-STRETCH panels on sides and inner sleeves. Racing- shaped sleeves. Auto lock zippers on sleeves. Neoprene at collar for sweat absorbing. 2 outer pockets. Air ventilation pockets on front and back Perforated leather panels for air ventilation. Waist adjustment with strap and SPYKE snap logo button. 1 inner pocket. Thermal removable quilt liner with mobile and document pocket. SPYKE logo buttons. Connecting zipper.

IMOLA EVO 20 LADY

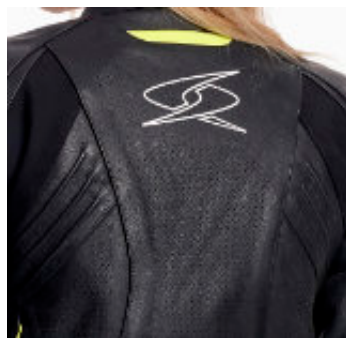
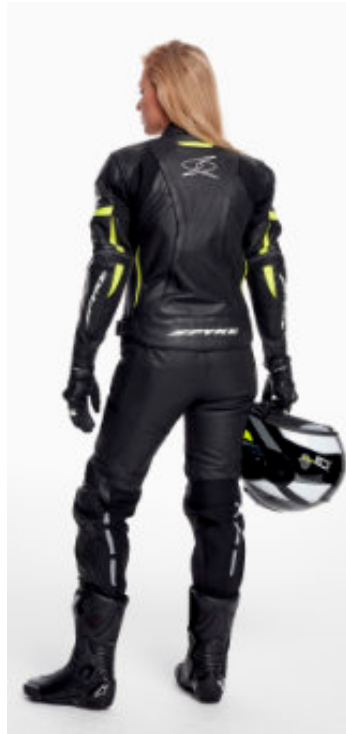
110364

38 40 42 44 46 48 50 52 54 56 58

DETAILS



BACK



COLOR OPTIONS



10136



10164



10101

Technical Solutions

Shoulder and elbow protectors CE-approved according to PN EN 1621-1:2012. Back pocket for CE back protector level 2. Stitching: safety seams construction according to EN 17092:2020 standard. Premium cow hide outer shell construction. X-STRETCH panels on sides and inner sleeves. Racing- shaped sleeves. Auto lock zippers on sleeves. Neoprene at collar for sweat absorbing. 2 outer pockets. Air ventilation pockets on front and back. Perforated leather panels for air ventilation. Waist adjustment with strap and SPYKE snap logo button. 1 inner pocket. Thermal removable quilt liner with mobile and document pocket. SPYKE logo buttons. Connecting zipper.

Special features



Materials

2 in 1 jacket. Soft-Touch 0,9/1,0 mm cow leather. Stretch fiber inserts. X-STRETCH fabric on shoulders, arms and sides. Inside fixed poly-mesh lining with stretch zones. Removable inner thermal polyester and polyamide padding.

MISANORSPANTS

T10418

- 42
- 44
- 46
- 48
- 50
- 52
- 54
- 56
- 58
- 60
- 62



BACK



DETAILS



COLOR OPTIONS



10000



10135

Special features

Materials

1,0/1,1 mm cow leather. Inside: fixed poly-mesh lining.

Technical Solutions

High quality cow leather pants. Increased protection thanks to seamless construction in friction areas and internal lining. Shock absorption side paddings. To increase the freedom of movements accordion baffles at knee and waist. X-STRETCH fabric in inguinal area, thighs and calves. Perforated area on front and back for better breathability. Internal waist connection zipper allows attachment to jacket. Two external pockets. Knee protectors CE-approved according to PN EN 1621-1:2012. Stitching: safety seams construction according to EN 17092:2020 standard.

SPYKE™
MISANO RS PANTS



ARAGON GT DRY TECNO
120630

- 42
- 44
- 46
- 48
- 50
- 52
- 54
- 56
- 58
- 60
- 62



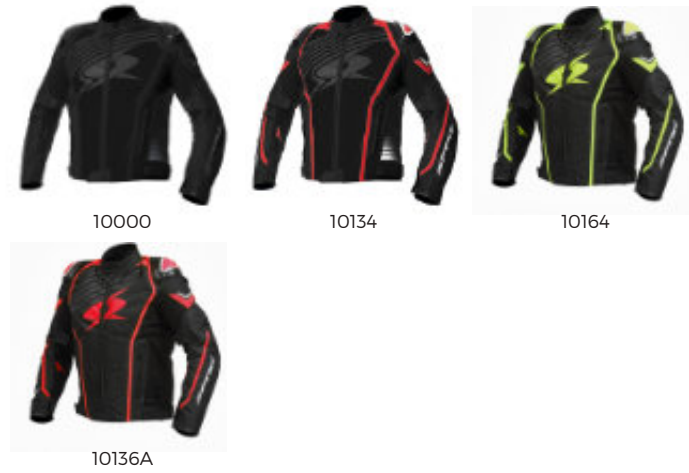
BACK



DETAILS



COLOR OPTIONS



Special features

ZERO BLACK							

Materials

3 in 1 jacket. Outer shell – 100% polyester 600D. Removable waterproof and breathable membrane HUMAX 20000. Removable thermal lining.

Technical Solutions

Shoulder and elbow protectors CE- certified according to PN EN 1621-1:2012. Back pocket for CE back protector level 2. External shoulder protectors with SPYKE logo. Stitching: safety seams construction according to EN 17092:2020 standard. X-STRETCH panels on sides and inner sleeves. Racing-shaped sleeves. Accordion inserts on elbow. Sleeve volume regulations. Bottom sleeve regulation with strap and velcro. Auto lock zippers on sleeves. 2 outer pockets. Air ventilation pockets at front and at back. Neoprene at the collar for sweat absorption. Neck closing with volume regulation. Bottom regulation with snap button system. Reflective zones on sleeves and back. Thermal removable quilt liner with mobile and document pocket. 1 inner pocket. Connecting zipper.

SPYKE™
ARAGON GT DRY TECNO



SPYKE™
ESTORIL GT DRY TECNO

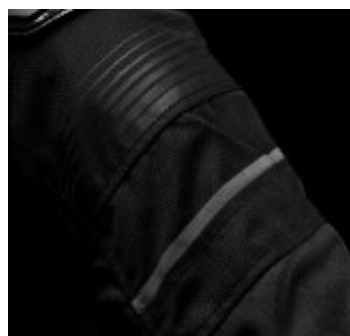


ESTORIL GT DRY TECNO

120631

42 44 46 48 50 52 54 56 58 60 62

DETAILS



BACK



COLOR OPTIONS



10000

Technical Solutions

Shoulder and elbow protectors CE- certified according to PN EN 1621-1:2012. Back pocket for CE back protector level 2. External shoulder protectors with SPYKE logo. Stitching: safety seams construction according to EN 17092:2020 standard. X-STRETCH panels on sides and inner sleeves. Racing-shaped sleeves. Accordion inserts on elbow. Sleeve volume regulations. Bottom sleeve regulation with strap and velcro. Auto lock zippers on sleeves. 2 outer pockets. Air ventilation pockets at front and at back. Neoprene at the collar for sweat absorption. Neck closing with volume regulation. Bottom regulation with snap button system. Reflective zones on sleeves, front and back. Thermal removable quilt liner with mobile and document pocket. 1 inner pocket. Connecting zipper.

Special features

ZERO BLACK							

Materials

2 in 1 jacket. Outer shell – polyester 600D, fixed 100% polyester mesh lining and waterproof membrane HUMAX 20000. Removable thermal lining.

ESTORILGT
120632

- 42
- 44
- 46
- 48
- 50
- 52
- 54
- 56
- 58
- 60
- 62



BACK



DETAILS



COLOR OPTIONS



10000



10133

Special features

ZERO BLACK							

Materials

2 in 1 jacket. Outer shell – polyester 600D, fixed 100% polyester mesh lining. Removable thermal lining.

Technical Solutions

Shoulder and elbow protectors CE- certified according to PN EN 1621-1:2012. Back pocket for CE back protector level 2. External shoulder protectors with SPYKE logo. Stitching: safety seams construction according to EN 17092:2020 standard. X-STRETCH panels on sides and inner sleeves. Racing-shaped sleeves. Accordion inserts on elbow. Sleeve volume regulations. Bottom sleeve regulation with strap and velcro. Auto lock zippers on sleeves. 2 outer pockets. Air ventilation pockets at front and at back. Neoprene at the collar for sweat absorption. Neck closing with volume regulation. Bottom regulation with snap button system. Reflective zones on sleeves, front and back. Thermal removable quilt liner with mobile and document pocket. 1 inner pocket. Connecting zipper.

SPYKE™
ESTORIL GT DRY TECNO



**SPORT
GLOVES**

TECHPRO

130964

XXS XS S M L XL XXL 3XL 4XL

DETAILS

BACK



COLOR OPTIONS



10101



10166A



10232A



10233A



10136

Technical Solutions

Long racing premium cow leather gloves. Protective TPU knuckle and wrist protectors. Hidden finger protection. Hard TPU protective wrist opening protector. TPU palm slider. Reinforced leather on palm for good protection. Finger bridge for better protection. Wrist opening with velcro closure. Kevlar inside for high end protection. Accordion baffles on fingers for easy movement. Touchscreen compatible. Velcro cuff opening. Soft Polyester lining inside.

Special features



Materials

Calf leather, Clarino.

SPYKE™
TECH RACE



TECHRACE

130965

XXS XS S M L XL XXL 3XL 4XL

DETAILS

BACK



COLOR OPTIONS



10000



10136A

Technical Solutions

Long racing premium cow leather gloves. Protective TPU knuckle protector. TPU finger protection. Nice wrist protector. Padding at crucial areas. Palm grip for excellent strength. Wrist opening with velcro closure. Accordion baffles on fingers for easy movement. Velcro cuff opening. Touchscreen compatible. Soft Polyester lining inside.

Special features



Materials

Calf leather, Clarino.

TECHSPORT VENTED 2.0

130969

- XXS
- XS
- S
- M
- L
- XL
- XXL
- 3XL
- 4XL



BACK



DETAILS



COLOR OPTIONS



10101

10107

10135

Special features

Technical Solutions

Short racing premium leather gloves with perforations for air ventilation. Protective TPU knuckle protector with ventilation holes. Hard TPU finger protection. TPU palm slider. Nice opening TPR strap. Padding at crucial areas. Reinforced layers of leather at the palm for extra protection. Touchscreen compatible. Velcro cuff opening. Soft polyester lining inside.

Materials

Calf leather, Clarino.

TECH SPORT LADY 2.0

130970

XXS XS S M L XL XXL 3XL 4XL

DETAILS

BACK



COLOR OPTIONS



10135

10101

Technical Solutions

Short racing premium leather gloves with perforations for air ventilation. Protective TPU knuckle protector with ventilation holes. Hard TPU finger protection. TPU palm slider. Nice opening TPR strap. Padding at crucial areas. Reinforced layers of leather at the palm for extra protection. Touchscreen compatible. Velcro cuff opening. Soft polyester lining inside.

Special features



Materials

Calf leather, Clarino.



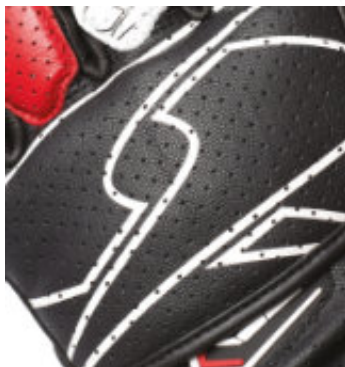
SPYKE™
TECH SPORT VENTED

TECH SHORT2.0

130971

XXS XS S M L XL XXL 3XL 4XL

DETAILS



BACK



COLOR OPTIONS



10101

10135

10114

Technical Solutions

Short racing Leather gloves with perforations for air ventilation. Micro fiber + tricot laminated palm. Leather reinforcements at palm for protection. Back hand printing area from cow nappa leather. Goat leather in fourchettes. TPR logos at wrist with velcro. Touchscreen compatible.

Special features



Materials

Cow leather, goat leather, microfiber.

EXPLORE TOUR

SPYKE™
SAHARA VENTED



SPYKE™
ARTICA DRY TECNO



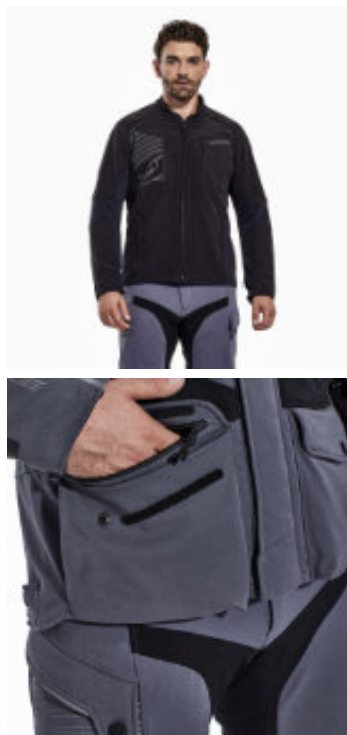
DRY TECNO TOURING JACKET

ARTICA DRY TECNO

120541

42 44 46 48 50 52 54 56 58 60 62

DETAILS



BACK



COLOR OPTIONS



Technical Solutions

Shoulder and elbow protectors CE- certified according to PN EN 1621-1:2012. Back pocket for CE back protector level 2. Stitching: safety seams construction according to EN 17092:2020 standard. Neoprene at collar for sweat absorption. Neck closing with volume regulation. Reinforcement panels at sleeves. At sleeve bottom waterproof zipper for regulation and ventilation. Sleeve width with volume regulation. Waist adjustment with tape and buckle. Wrist adjustment with strap and velcro. Ventilation pockets on front and back closed by waterproof zippers. Waterproof pockets on front and back. Bottom adjustment with snap. SPYKE logo buttons. Reflective zones at front, back and sleeves. Reflective material in compliance with EN 20471 standard. All outerseams are seamsealed. All outershell zippers are waterproof. Connection zipper. Removable and separately wearable interior jacket.

Special features

Materials

2 in 1 jacket. Outer jacket: 89% Nylon+ 11% Spandex PD/WR/PU laminated (10k/10k). Lining: poly mesh + 3d mesh + lining 87% polyester 13% Spandex 480 D SD D.T. for facing. Removable inner jacket. Outer shell: Softshell 90% polyester 10% Spandex. Lining: 87% polyester 13% Spandex.

SPYKE™
ARTICA DRY TECNO





SAHARA VENTED

120543

- 42
- 44
- 46
- 48
- 50
- 52
- 54
- 56
- 58
- 60
- 62



BACK



DETAILS



COLOR OPTIONS



10101



10401



10407



10405

Special features

Materials

3 in 1 jacket. Outer shell – 100% polyester 600D. Removable waterproof and breathable membrane. Removable thermal lining.

Technical Solutions

Shoulder and elbow protectors are CE-approved according to PN EN 1621-1:2012. Back pocket for CE back protector level 2. Stitching: safety seams construction according to EN 17092:2020 standard. Waist adjustment with tape and buckle. Reflective zones front, back, and sleeves. Reflective material in compliance with EN 20471 standard. Air ventilation panels at front and back. Waterproof pocket at the back. Sleeve volume regulation. Neck closing with volume regulation. Neoprene at collar for sweat absorption. Air ventilation window on the front with zipping. Functional waterproof pockets on the front. Bottom volume regulation with snap button. Twin head zipper at the bottom of sleeve. Napoleon pocket inside the jacket. SPYKE logo buttons. Connecting zipper. Reinforcement panel at sleeves.

SPYKE™
SAHARA VENTED



EQUATOR DRY TECNO

120520

42 44 46 48 50 52 54 56 58 60 62



BACK



DETAILS



COLOR OPTIONS



Special features

Materials

2 in 1 jacket. Outer shell – polyester 600D, fixed 100% polyester mesh lining. Removable, breathable, 15000 waterproof, polyester fabric connected with softshell as thermal lining. All layers can be used separately. Closure: YKK Zippers & YKK Cosmo Hook & Loops.

Technical Solutions

Shoulder and elbow protectors CE-certified according to PN EN 1621-1:2012. Back pocket for CE back protector level 2. Stitching: safety seams construction according to EN 17092:2020 standard. Waist adjustment with strap and velcro. Reflective zones front, back, and sleeves. Reflective material in compliance with EN 20471 standard. Front closure with magnetic zipper. Mesh anti-static and anti-bacterial lining with an extra soft finish for a good direct skin touch feeling. Air ventilation pockets on back. Waterproof pocket at the back. Sleeve volume regulation. Neck closing with volume regulation. Neoprene at collar for sweat absorbing. Air ventilation window on front with a zip and magnetic button. Functional waterproof pockets on front. The accordion baffle on the elbow. Bottom volume regulation with snap button. Twin head zipper at the bottom of sleeve. Napoleon pocket inside the jacket. Removable and separately wearable interior waterproof jacket. SPYKE logo buttons. Connecting zipper.

EQUATOR DRY TECNO LADY

120530

40 42 44 46 48 50 52 54 56 58 60

DETAILS

BACK



COLOR OPTIONS



10402



10186



10408

Technical Solutions

Shoulder and elbow protectors CE-certified according to PN EN 1621-1:2012. Back pocket for CE back protector level 2. Stitching: safety seams construction according to EN 17092:2020 standard. Waist adjustment with strap and velcro. Reflective zones front, back, and sleeves. Reflective material in compliance with EN 20471 standard. Front closure with magnetic zipper. Mesh anti-static and anti-bacterial lining with an extra soft finish for a good direct skin touch feeling. Air ventilation pockets on back. Waterproof pocket at the back. Sleeve volume regulation. Neck closing with volume regulation. Neoprene at collar for sweat absorbing. Air ventilation window on front with a zip and magnetic button. Functional waterproof pockets on front. The accordion baffle on the elbow. Bottom volume regulation with snap button. Twin head zipper at the bottom of sleeve. Napoleon pocket inside the jacket. Removable and separately wearable interior waterproof jacket. SPYKE logo buttons. Connecting zipper.

Special features

Materials

2 in 1 jacket. Outer shell – polyester 600D, fixed 100% polyester mesh lining. Removable, breathable, 15000 waterproof, polyester fabric connected with softshell as thermal lining. All layers can be used separately. Closure: YKK Zippers & YKK Cosmo Hook & Loops.

SPYKE™
COMPASS DRY TECNO



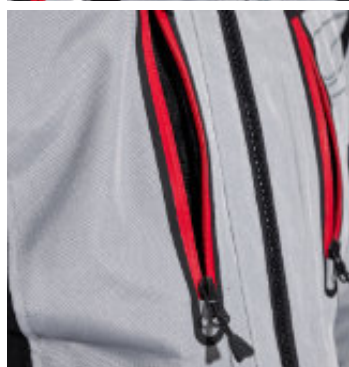
COMPASS DRY TECNO

120542

42 44 46 48 50 52 54 56 58 60 62

DETAILS

BACK



COLOR OPTIONS



10117



10164



10404

Technical Solutions

Shoulder and elbow protectors CE- approved according to PN EN 1621-1:2012. Back pocket for CE back protector level 2. Stitching: safety seams construction according to EN 17092:2020 standard. Adjustable bottom with snap button. Sleeve opening with regulation. Sleeve volume regulation. Zip fastener at sleeve with „flat-lock“ system (autolocking and anti-floating system). Neck closing with volume regulation. Reflective zones on sleeves, front and back. Reflective material in compliance with EN 20471 standard. SPYKE logo buttons. Connecting zipper. Air ventilation pockets at front and back. Waist adjustment with strap and velcro.

Special features

Materials

2 in 1 jacket. Outer shell - 100% polyester 600D, fixed 100% mesh lining. Removable waterproof membrane, fixed Nylon soft fabric and thermal lining.

COMPASS DRY TECNO LADY

120552

40 42 44 46 48 50 52 54 56 58 60



BACK



DETAILS



COLOR OPTIONS



10117



10164



10404

Special features

Materials

2 in 1 jacket. Outer shell - 100% polyester 600D, fixed 100% mesh lining. Removable waterproof membrane, fixed Nylon soft fabric and thermal lining.

Technical Solutions

Shoulder and elbow protectors CE- approved according to PN EN 1621-1:2012. Back pocket for CE back protector level 2. Stitching: safety seams construction according to EN 17092:2020 standard. Adjustable bottom with snap button. Sleeve opening with regulation. Sleeve volume regulation. Zip fastener at sleeve with „flat-lock“ system (autolocking and anti-floating system). Neck closing with volume regulation. Reflective zones on sleeves, front and back. Reflective material in compliance with EN 20471 standard. SPYKE logo buttons. Connecting zipper. Air ventilation pockets at front and back. Waist adjustment with strap and velcro.

SPYKE™
COMPASS DRY TECNO



AIRMASTER
120650

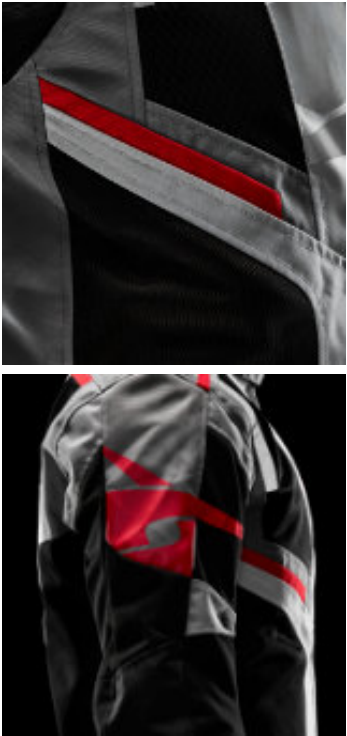
- 42
- 44
- 46
- 48
- 50
- 52
- 54
- 56
- 58
- 60
- 62



BACK



DETAILS



COLOR OPTIONS



Special features

Materials

2 in 1 jacket. Shell: 100% polyester 600D. Strong mesh panels from 100% polyester. Inside: removable, breathable and waterproof membrane HUMAX 20000.

Technical Solutions

Shoulder and elbow protectors CE- certified according to PN EN 1621-1:2012. Back pocket for CE back protector level 2. Stitching: safety seams construction according to EN 17092:2020 standard. Adjustable bottom with strap and velcro. Sleeve opening with regulation. Sleeve volume regulation. Zip fastener at sleeve with „flat-lock“ system (autolocking and anti-floating system). Neck closing with volume regulation. Reflective zones on sleeves, front and back. Reflective material in compliance with EN 20471 standard. Mesh panels for better breatheability. SPYKE logo buttons. Connecting zipper.

VENTED TOURING JACKET

AIRMASTERLADY

120651

40 42 44 46 48 50 52 54 56 58 60

DETAILS



BACK



COLOR OPTIONS



10101



10404



10405



10406

Technical Solutions

Shoulder and elbow protectors CE- certified according to PN EN 1621-1:2012. Back pocket for CE back protector level 2. Stitching: safety seams construction according to EN 17092:2020 standard. Adjustable bottom with strap and velcro. Sleeve opening with regulation. Sleeve volume regulation. Zip fastener at sleeve with „flat-lock“ system (autolocking and anti-floating system). Neck closing with volume regulation. Reflective zones on sleeves, front and back. Reflective material in compliance with EN 20471 standard. Mesh panels for better breatheability. SPYKE logo buttons. Connecting zipper.

Special features

Materials

2 in 1 jacket. Shell: 100% polyester 600D. Strong mesh panels from 100% polyester. Inside: removable, breathable and waterproof membrane HUMAX 20000.

LEVANTE

120652

- 42
- 44
- 46
- 48
- 50
- 52
- 54
- 56
- 58
- 60
- 62



BACK



DETAILS



COLOR OPTIONS



10101



10164

Special features

Materials

2 in 1 jacket. Shell: 100% polyester 600D. Strong mesh panels from 100% polyester. Inside: removable, breathable and waterproof membrane.

Technical Solutions

Shoulder and elbow protectors CE-approved according to PN EN 1621-1:2012 standard. Back pocket for CE back protector level 2. Stitching: safety seams construction according to EN 17092:2020 standard. Adjustable bottom with strap and velcro. Sleeve opening with regulation. Sleeve volume regulation. Sleeve zipper with „flat-lock“ system (auto-locking and anti-floating system). Neck closing with volume regulation. Reflective prints on sleeves, front, and back. Reflective prints according to EN 20471 standard. Mesh panels for better breathability. SPYKE logo buttons. Connecting zipper.

VENTED TOURING JACKET

LUFTMAN 2.0

120687

42 44 46 48 50 52 54 56 58 60 62

DETAILS



BACK



COLOR OPTIONS



10101

Technical Solutions

CE certified shoulder and elbow protectors according to PN EN 1621-1:2012. Back pocket for CE back protector level 2. Stitching: safety seams construction according to EN 17092:2020 standard. Front and back mesh panels for air ventilation. Sleeve bottom regulation with zipper and strap snap buttons. Sleeve volume regulation. Neoprene collar for sweat absorption. Neck closing with volume regulation. Velcro bottom regulation. Reflective zones on the front, back, and sleeves. 2 outer pockets. 1 inner pocket.

Special features



Materials

2 in 1 jacket. Outer shell – 100% polyester 600D, fixed 100% mesh lining. Removable REISSA membrane, fixed thermal lining. 100% polyester mesh panels.

ARTICA DRY TECNO PANTS

120745

- 42
- 44
- 46
- 48
- 50
- 52
- 54
- 56
- 58
- 60
- 62



BACK



DETAILS



COLOR OPTIONS



Special features

Materials

2 in 1 pants. Outer shell: 89% Nylon+ 11% Spandex PD/WR/PU laminated (10k/10k). Lining: poly mesh + 3d mesh. Removable inner thermal lining. 100% polyester.

Technical Solutions

Knee and hip protectors CE -certified according to PN EN 1621-1:2012. Stitching: safety seams construction according to EN 17092:2020 standard. Fake front pockets for ventilation. Waist adjustment with strap and velcro. Bottom leg regulation with zipper and velcro. Reflective zones on front and back. Reflective zones according to EN 20471 standard. SPYKE logo buttons.Two functional front waterproof pockets. Short zipper on back and buckles on the front for suspenders. Anti-slide grip at the seat. Removable inner thermal lining. All outer seams are seam-sealed. All outer shell zippers are waterproof. Connecting zipper.

SAHARA VENTED PANTS

120748

42 44 46 48 50 52 54 56 58 60 62

DETAILS



BACK



COLOR OPTIONS



10405



10101



10407



10401

Technical Solutions

Knee protectors CE-certified according to PN EN 1621-1:2012. Stitching: safety seams construction according to EN 17092:2020 standard. Ventilated thigh pockets, adjustable with zip fasteners. Waist adjustment with strap and velcro. Bottom leg adjustment with velcro. Accordion panels on knees. Front and back pockets. Reflective zones. Reflective zones according to EN 20471 standard. Removable waterproof membrane. Removable thermal lining. SPYKE logo buttons. Connecting zipper.

Special features

Materials

3 in 1 pants. Outer shell – polyester 600D. Removable waterproof membrane. Removable thermal lining.

EQUATOR DRY TECNO PANTS

120720

42 44 46 48 50 52 54 56 58 60 62



BACK



DETAILS



COLOR OPTIONS



10402



10186



10408

Special features

Materials

2 in 1 pants. Outer shell – polyester 600D, fixed 100% polyester mesh lining. Removable HUMAX 20000 waterproof and breathable membrane, fixed thermal lining. Closure : YKK Zippers & YKK Cosmo Hook & Loop.

Technical Solutions

Knee protectors CE- approved according to PN EN 1621-1:2012. Hip pockets for certified hip protectors. Stitching: safety seams construction according to EN 17092:2020 standard. Folding fake front pockets for ventilation. Ventilation thigh panels adjustment with zip fasteners and a magnetic button. Waist adjustment with strap and velcro. Zipper and velcro regulation at the bottom of the leg. Reflective zones on front and back. Reflective material in compliance with EN 20471 standard. Mesh anti-static and anti-bacterial lining with an extra soft finish for a good direct skin touch feeling. SPYKE logo buttons. Two functional front waterproof pockets. Connecting zipper. Short zipper on the back and buckles on the front for suspenders. Removable inner membrane with thermal lining.

EQUATOR DRY TECNO PANTS LADY

120730

40 42 44 46 48 50 52 54 56 58 60

DETAILS

BACK



COLOR OPTIONS



10402



10186



10408

Technical Solutions

Knee protectors CE- approved according to PN EN 1621-1:2012. Hip pockets for certified hip protectors. Stitching: safety seams construction according to EN 17092:2020 standard. Folding fake front pockets for ventilation. Ventilation thigh panels adjustment with zip fasteners and a magnetic button. Waist adjustment with strap and velcro. Zipper and velcro regulation at the bottom of the leg. Reflective zones on front and back. Reflective material in compliance with EN 20471 standard. Mesh anti-static and anti-bacterial lining with an extra soft finish for a good direct skin touch feeling. SPYKE logo buttons. Two functional front waterproof pockets. Connecting zipper. Short zipper on the back and buckles on the front for suspenders. Removable inner membrane with thermal lining.

Special features

Materials

2 in 1 pants. Outer shell - polyester 600D, fixed 100% polyester mesh lining. Removable HUMAX 20000 waterproof and breathable membrane, fixed thermal lining. Closure : YKK Zippers & YKK Cosmo Hook & Loop.

COMPASS DRY TECNO PANTS

120746

- 42
- 44
- 46
- 48
- 50
- 52
- 54
- 56
- 58
- 60
- 62



BACK



DETAILS



COLOR OPTIONS



10404



10117



10164

Special features

Materials

2 in 1 pants. Outer shell – polyester 600D fixed with 100% polyester mesh lining. Removable, waterproof membrane with fixed thermal lining.

Technical Solutions

Knee protectors CE-certified according to PN EN 1621-1:2012. Stitching: safety seams construction according to EN 17092:2020 standard. Ventilated thigh pockets, adjustable with zip fasteners. Waist adjustment with strap and velcro. Bottom leg adjustment with velcro. Accordion panels on knees. Front and back pockets. Reflective zones. Reflective zones according to EN 20471 standard. Removable inner thermal lining with membrane. Anti-static and anti-bacterial mesh lining with extra soft finish for good direct skin touch feeling. SPYKE logo buttons. Connecting zipper.

COMPASS DRY TECNO PANTS LADY

120744

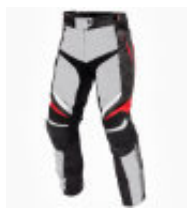
40 42 44 46 48 50 52 54 56 58 60

DETAILS

BACK



COLOR OPTIONS



10404



10117



10164

Technical Solutions

Knee protectors CE-certified according to PN EN 1621-1:2012. Stitching: safety seams construction according to EN 17092:2020 standard. Ventilated thigh pockets, adjustable with zip fasteners. Waist adjustment with strap and velcro. Bottom leg adjustment with velcro. Accordion panels on knees. Front and back pockets. Reflective zones. Reflective zones according to EN 20471 standard. Removable inner thermal lining with membrane. Anti-static and anti-bacterial mesh lining with extra soft finish for good direct skin touch feeling. SPYKE logo buttons. Connecting zipper.

Special features

Materials

2 in 1 pants. Outer shell – polyester 600D fixed with 100% polyester mesh lining. Removable, waterproof membrane with fixed thermal lining.

SPYKE™
ARTICA DRY TECNO



BREVA DRY TECNO

120726

42 44 46 48 50 52 54 56 58 60 62

DETAILS

BACK



COLOR OPTIONS



10101

Technical Solutions

CE certified knee protectors according to PN EN 1621-1:2012. Stitching: safety seams construction according to EN 17092:2020 standard. Accordion inserts at knees. Air ventilation pockets at thighs. Waist adjustment with strap and belt. Velcro regulation at the bottom of the leg. Two functional pockets on front. One functional pocket on back. Reflective zones on front and back. SPYKE logo buttons. Long connecting zipper. Short zipper on the back and buckles on the front for suspenders.

Special features

Materials

2 in 1 pants. Shell fabric 100% Nylon soft with Teflon® treatment, fixed waterproof membrane and normal mesh lining. Removable thermal lining.

**EXPLORE
ADVENTURE**

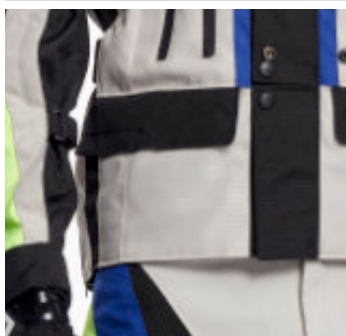
NAMIBXTRJACKET

120633

42 44 46 48 50 52 54 56 58 60 62

DETAILS

BACK



COLOR OPTIONS



10408



10410



10120

Technical Solutions

Removable sleeves. Removable neck to put in the universal neck brace protection. Adjustable neckline. Big back pocket for camelback. Front and back exit for water system. Front double use flap. Clear double pocket for time stamp card. Full-opening mesh lining for personalization. 6 front pockets, 2 of them waterproof. 1 internal pocket. 1 big back pocket. Velcro waist and sleeves adjustment. Velcro wrist and collar closure. 4 front air vents and 2 back air vents. Reflective zones on shoulders, sleeves and back.

Special features



Materials

100% High strength polyester 600 D with Teflon® treatment. Inner: fixed poly-mesh lining. X-STRETCH panels on shoulders.



SPYKE™
NAMIB XTR



ADVENTURE PANTS

NAMIBXTR PANTS

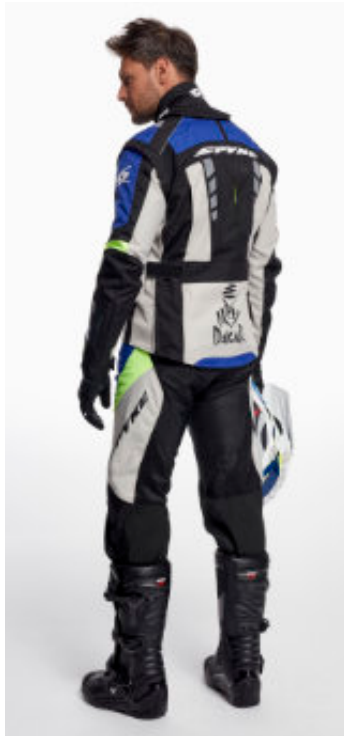
120743

42 44 46 48 50 52 54 56 58 60 62

DETAILS



BACK



COLOR OPTIONS



10408



10410



10120

Technical Solutions

Dynamic seamless construction in friction areas on pants and inside lining. Pinstripe panels at groin and knee. X-STRETCH inserts at the waist and calves. Double velcro adjustable waist closure. High-strength mesh panel at the shin.

Special features



Materials

100% high strength poly 600 with Teflon® treatment. Ballistic fabric, 100% polyester at back waist and knees. Aramid fabric inner insert for knee. Fixed inner poly-mesh lining.

**EXPLORE
GLOVES**

EXPLORE GLOVES

DRYTECNO TOURING GLOVES

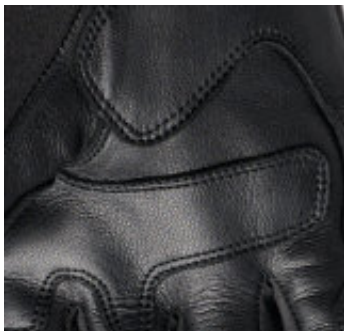
LATITUDE DRYTECNO

131040

XXS XS S M L XL XXL 3XL 4XL

DETAILS

BACK



COLOR OPTIONS



10101

Technical Solutions

Hidden plastic knuckle protection. Plastic side of palm protection. Reflective 3M zones on fingers. Wrist opening with velcro closure. Velcro cuff opening. Touchscreen compatible. Goat leather palm. Goat leather reinforcements on palm and side of hand. Leather accordion baffles on fingers. The original thin, light, and warm synthetic 3M insulation inside. Soft lining with Anti-Bacterial and Anti-odour coating.

Special features



Materials

Polyamide fabric combined with natural goat leather, 141g Thermolite, 3M Thinsulate Insulation with soft lining, fixed waterproof membrane.

TOURING 2 DRY TECNO

131032

- XXS
- XS
- S
- M
- L
- XL
- XXL
- 3XL
- 4XL



BACK



DETAILS



COLOR OPTIONS



10101



10501

Special features

Technical Solutions

Semi-rigid moulded knuckle protection. Soft-touch lining. Shock absorbing padding on phalanges, palm, back, and lower palm. Grip inserts on the palm. Leather reinforcements on little finger and palm. Clarino palm. Reflective piping on hand back. Wrist opening with adjustable velcro closure.

Materials

Softshell, calf leather, Clarino, Dry Tecno membrane.

EXPLORE GLOVES

DRY TECNO TOURING GLOVES

TOURING 2 DRY TECNO LADY

131036

XXS XS S M L XL XXL 3XL 4XL

DETAILS

BACK



COLOR OPTIONS



10101



10501

Technical Solutions

Semi-rigid moulded knuckle protection. Soft-touch lining. Shock absorbing padding on phalanges, palm, back, and lower palm. Grip inserts on the palm. Leather reinforcements on little finger and palm. Clarino palm. Reflective piping on hand back. Wrist opening with adjustable velcro closure.

Special features



Materials

Softshell, calf leather, Clarino, Dry Tecno membrane.





SPYKE™
COMMUTER DRY TECNO

STOCKHOLM

131046

- XXS
- XS
- S
- M
- L
- XL
- XXL
- 3XL
- 4XL



BACK



DETAILS



COLOR OPTIONS



Special features

Materials

Polyamid fabric with natural goat leather and artificial leather, fixed waterproof membrane.

Technical Solutions

Hidden plastic knuckle protection. Wrist regulation with an elastic band. Additional regulation with strap and velcro. Touchscreen compatible. Artificial leather on the palm. Inside, fixed waterproof and breathable membrane. Soft lining inside.

EXPLORE GLOVES

DRYTECNO TOURING GLOVES

COMMUTER DRYTECNO

131042

XXS XS S M L XL XXL 3XL 4XL

DETAILS



BACK



COLOR OPTIONS



10101

Technical Solutions

Hidden plastic knuckle protection. Wrist regulation with elastic. Additional strap and velcro regulation. Touchscreen compatible. Artificial leather at the palm. Artificial leather reinforcements at the palm. Inside, fixed waterproof and breathable membrane. Soft lining with Anti-Bacterial and Anti-odour coating. The original thin, light, and warm synthetic 3M insulation inside.

Special features



Materials

Polyamide fabric combined with natural goat leather and artificial leather, all around 3 mm fur padding, fixed 10000 waterproof membrane.

NAMIBGLV

131045

- XXS
- XS
- S
- M
- L
- XL
- XXL
- 3XL
- 4XL



BACK



DETAILS



COLOR OPTIONS



10000

10411

10414



10413

Special features

Technical Solutions

Cuff fastening with SPYKE logo. MICROFIBER NASH reinforcement at the palm. Cuff neoprene finishing. Increased finger grip. TPR rubber elements. Reinforcement at the thumb.

Materials

96% Nylon 4% polyurethane 2WAT SPAN Nylon fabric combined with YG SPAN 100% polyester. Lining: 95% polyester 5% CU – antibacterial lining.

SPYKE™
NAMIB CLV



**RIDE
ICON**

SPYKE™
SUBURRA



SPYKE™
MILANO 2.0



LEATHER JACKETS

MILANO2.0

110344

42 44 46 48 50 52 54 56 58 60 62

DETAILS



BACK



COLOR OPTIONS



13101



10035



10101

Technical Solutions

Shoulder and elbow protectors CE-approved according to PN EN 1621-1:2012. Back pocket for CE back protector level 2. Stitching: safety seams construction according to EN 17092:2020 standard. Antic silver no. 5 METAL front opening zipper. Zippers at front opening, sleeves, and waist pockets. 4 outer pockets. Neoprene at collar for sweat absorbing. Air ventilation pocket on back. Perforated areas on front, back, and sleeves for better air ventilation. 1 inner pocket. SPYKE logo buttons. Soft Polyester lining inside. Belt loop to connect jacket and pants. Thermal removable quilt liner with mobile and document pocket.

Special features



Materials

2 in 1 jacket. Soft-Touch 0,9/1,0 mm buffalo leather. Inside fixed poly-mesh lining with stretch zones. Removable inner thermal polyester and polyamide padding.

SPYKE™
MILANO 2.0 LADY



MILANO20LADY

110345

40 42 44 46 48 50 52 54 56 58 60

DETAILS

BACK



COLOR OPTIONS



13101



10035



10101

Technical Solutions

Shoulder and elbow protectors CE-approved according to PN EN 1621-1:2012. Back pocket for CE back protector level 2. Stitching: safety seams construction according to EN 17092:2020 standard. Antic silver no. 5 METAL front opening zipper. Zippers at front opening, sleeves, and waist pockets. 4 outer pockets. Neoprene at collar for sweat absorbing. Air ventilation pocket on back. Perforated areas on front, back, and sleeves for better air ventilation. 1 inner pocket. SPYKE logo buttons. Soft Polyester lining inside. Belt loop to connect jacket and pants. Thermal removable quilt liner with mobile and document pocket.

Special features



Materials

2 in 1 jacket. Soft-Touch 0,9/1,0 mm buffalo leather. Inside fixed poly-mesh lining with stretch zones. Removable inner thermal polyester and polyamide padding.

SPYKE™
SUBURRA



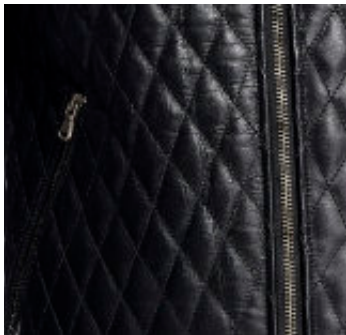
LEATHER JACKETS

SUBURRA

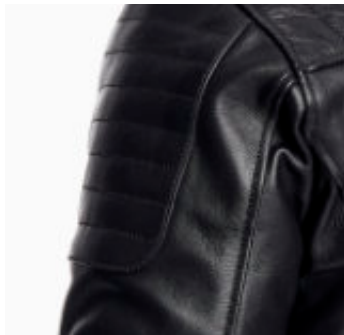
110365

42 44 46 48 50 52 54 56 58 60 62

DETAILS



BACK



COLOR OPTIONS



10101

Technical Solutions

Shoulder and elbow protectors CE-approved according to PN EN 1621-1:2012. Back pocket for CE back protector level 2. Stitching: safety seams construction according to EN 17092:2020 standard. Zippers at front opening, sleeves and waist pockets. 2 outer pockets. Neoprene at collar for sweat absorption. SPYKE logo buttons. Soft Polyester mesh lining inside. Inside document pocket.

Special features



Materials

100% cow leather.



PARIS

170611

- 42
- 44
- 46
- 48
- 50
- 52
- 54
- 56
- 58
- 60
- 62



BACK



DETAILS



COLOR OPTIONS



10101



10034

Special features

Technical Solutions

Shoulder and elbow protectors CE- certified according to PN EN 1621-1:2012.Back pocket for CE back protector level 2. Stitching: safety seams construction according to EN 17092:2020 standard.

Materials

2 in 1 jacket. Outer jacket: 100% Nylon, PU coated. Removable soft thermal lining.

SPYKE™
PARIS



BARCELONA

170608

- 42
- 44
- 46
- 48
- 50
- 52
- 54
- 56
- 58
- 60
- 62



BACK



DETAILS



COLOR OPTIONS



10101

Special features

Technical Solutions

Shoulder and elbow protectors CE- certified according to PN EN 1621-1:2012. Back pocket for CE back protector level 2. Stitching: safety seams construction according to EN 17092:2020 standard. Sleeve bottom regulation with snaps. Side zippers for better comfort. Air ventilation pocket on front, back and sleeves. Connecting loop.

Materials

Cotton with polyester shell fabric with coated wax finish. Fixed polyester satin lining.

LONDON

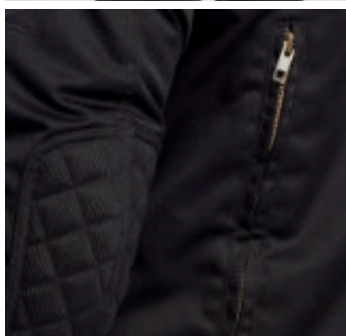
170610

42 44 46 48 50 52 54 56 58 60 62

DETAILS



BACK



COLOR OPTIONS



10101

Technical Solutions

Shoulder and elbow protectors CE-certified according to PN EN 1621-1:2012. Back pocket for CE back protector level 2. Stitching: safety seams construction according to EN 17092:2020 standard. YKK brass zippers. Neck and sleeve adjustment system with snap buttons. Front and back AIR ventilation. Sleeve volume regulation. Waist regulation with snap button.

Special features



Materials

2 in 1 jacket. Cotton with polyester shell fabric. Fixed waterproof membrane and normal mesh. Removable thermal lining.



SPYKE™
BARCELONA



SPYKE™
LONDON



RIDER
160700

- 26
- 28
- 30
- 32
- 34
- 36
- 38
- 40



BACK



DETAILS



COLOR OPTIONS



10101



10041

Special features

Technical Solutions

Knee protectors CE-certified according to PN EN 1621-1:2012. Stitching: safety seams construction according to EN 17092:2020 standard. Inner kevlar layer. Front and back pockets. SPYKE logo buttons.

Materials

Jeans pants. Outer layer: denim fabric.
Inner layer: kevlar fabric

DENIM

BETTY

160701

26 28 30 32 34 36 38 40

DETAILS



BACK



COLOR OPTIONS



10101



10041

Technical Solutions

Knee protectors CE-certified according to PN EN 1621-1:2012. Stitching: safety seams construction according to EN 17092:2020 standard. Inner kevlar layer. Front and back pockets. SPYKE logo buttons.

Special features



Materials

Jeans pants. denim fabric.
Inner layer: kevlar fabric.



**RIDE
GLOVES**

GLOVES

BIARRITZ DRY TECNO

131018

XXS XS S M L XL XXL 3XL 4XL

DETAILS

BACK



COLOR OPTIONS



10101



10035

Technical Solutions

Premium short leather gloves. Padding at crucial areas. Hidden knuckle finger protection. Reinforced layers of leather at palm and little finger for extra protection. Shock absorbing padding on phalanges, palm, back and lower palm. Velcro cuff opening. Soft Polyester lining inside. Touchscreen compatible.

Special features



Materials

100% buffalo leather. Fixed waterproof, breathable inner membrane.

BIARRITZ
131016

- XXS
- XS
- S
- M
- L
- XL
- XXL
- 3XL
- 4XL



BACK



DETAILS



COLOR OPTIONS



10101



10035

Special features

Materials

100% goat leather

Technical Solutions

Premium short leather gloves. Hidden hard knuckle and finger protection. Reinforced layers of leather at palm and little finger for extra protection. Touchscreen compatible. Velcro cuff opening. Soft polyester lining inside. Shock absorbing padding on phalanges.

SPYKE™
BIARRITZ VENTED 2.0



BIARRITZ VENTED 2.0

131019

- XXS
- XS
- S
- M
- L
- XL
- XXL
- 3XL
- 4XL



BACK



DETAILS



COLOR OPTIONS



10101

10035

Special features

Materials

100% buffalo leather.

Technical Solutions

Premium short leather gloves. Padding at crucial areas. Hidden knuckle and finger protection. Reinforced leather on palm for good protection. Shock absorbing padding on phalanges, palm, back, and lower palm. Perforated leather air ventilation panels. Velcro cuff opening. Soft Polyester lining inside. Touchscreen compatible.

SPYKE™
BIARRITZ VENTED 2.0



**RIDE
URBAN**

SPYKE™
HIKER



SPYKE™
HIKER

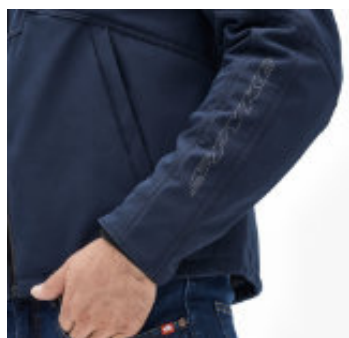


HIKER

120623

42 44 46 48 50 52 54 56 58 60 62

DETAILS



BACK



COLOR OPTIONS



10034



10101



10041

Technical Solutions

Shoulder and elbow protectors CE- certified according to PN EN 1621-1:2012. Back pocket for CE back protector level 2. Stitching: safety seams construction according to EN 17092:2020 standard. Racing shaped sleeves. Reflective zones on sleeves, front and back. Spyke logo buttons.

Special features



Materials

Outside softshell fabric: 97% polyester, 3% Spandex Softshell 3 layer fabric. Inside fixed poly lining.



**CASUAL
WEAR**

TEXTILE

SPYKE DKRT-SHIRT

180104

XXS XS S M L XL XXL 3XL 4XL

DETAILS



BACK



COLOR OPTIONS



10101



10200

Technical Solutions

High quality t-shirt with 3D DAKAR and SPYKE imprints.

Special features



Materials

100% cotton.



SPYKE DKRT-SHIRT LONG SLEEVE

180303

- XXS
- XS
- S
- M
- L
- XL
- XXL
- 3XL
- 4XL



BACK



DETAILS



COLOR OPTIONS



10101



10200

Special features



Materials

100% cotton.

Technical Solutions

High quality long sleeve shirt with 3D DAKAR and SPYKE imprints.
Ribbed sleeves.

TEXTILE

SPYKE DKR HOODIE

180404

XXS XS S M L XL XXL 3XL 4XL

DETAILS



BACK



COLOR OPTIONS



10101

Technical Solutions

High quality shirt with 3D DAKAR and SPYKE imprints, functional and warm material, hood. Ribbed sleeves and bottom.

Special features



Materials

60% cotton, 40% polyester.

VALVE DKR HEAT

120622

- XXS
- XS
- S
- M
- L
- XL
- XXL
- 3XL
- 4XL



BACK



DETAILS



COLOR OPTIONS



10101

Special features

Technical Solutions

This product is CE certified to EN 17092-4:2020 standard (Class A certificate). Sleeve volume regulation. Reflective zones on sleeves, front and back. SPYKE logo buttons. USB port for powerbank, heated insert with on/off button. 10 000 mm waterproof membrane. Shoulder and elbow protectors CE-approved to PN EN 1621-1:2012 standard. Back pocket for CE back protector level 2. Stitching: Safety seams construction according to EN 17092:2020 standard.

Materials

Outside softshell fabric: 96% polyester, 4% Spandex. Softshell 3 layer fabric. Inside fixed poly lining and heating system inside.

SPYKE™
SPYKE DKR T-SHIRT



ACCESSORIES

LEGBAG

142001

ONE SIZE

DETAILS



COLOR OPTIONS



10101

Technical Solutions

Waist belt + thigh belt adjustment, 2 pockets with easy access. Waterproof zipper. Reflective imprints. Key chain inside.

Special features



Materials

100% polyester.



AQUA
142002

ONE SIZE

BACK

DETAILS



COLOR OPTIONS



10101



10134

Special features

REINFORCED XXXX THREAD	SAFETY SEAMS	DRY TECHNO
------------------------------	-----------------	------------

Materials

Thermoplastic PU.

Technical Solutions

Thermoplastic PU. Fully waterproof. One big and one small pocket. Straps for regulations.

AERO 142003

ONE SIZE

DETAILS



BACK



COLOR OPTIONS



10101

Technical Solutions

Strong shoulder straps, breast strap and belt strap. Hard EVA shell. Thick sponge at back for comfort. Inside laptop protective pocket.

Special features



Materials

Hard EVA shell.

URBEX
142004

ONE SIZE

BACK

DETAILS



COLOR OPTIONS



10101

Special features



Technical Solutions

Strong shoulder straps, breast strap and belt strap. Reflective material to increase visibility. Thick sponge at the back. Small pockets for different stuff.

Materials

100% polyester.

MONSOON RAIN JACKET

150000

XXS XS S M L XL XXL 3XL 4XL 5XL 6XL

DETAILS

BACK



COLOR OPTIONS



10101



10166

Technical Solutions

Waterproof lightweight jacket created to protect you from rain. Outerseams are seamsealed and additional reflective prints provide you greater visibility. The jacket comes with durable zipper.

Special features



Materials

Materials: 100% polyester.

MONSOON RAIN PANTS

150004

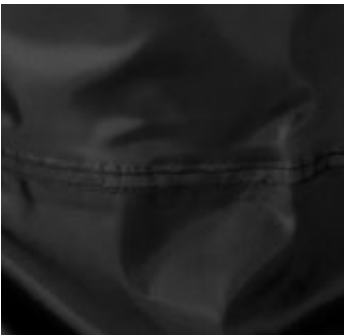
- XXS
- XS
- S
- M
- L
- XL
- XXL
- 3XL
- 4XL
- 5XL
- 6XL



BACK



DETAILS



COLOR OPTIONS



10101



10166

Special features



Materials

Materials: 100% polyester.

Technical Solutions

Waterproof lightweight pants created to protect you from rain. Outerseams are seamsealed. Adjustable waist making it more comfortable to wear.

CLOTHESCOVER

150001

ONE SIZE

DETAILS



COLOR OPTIONS



10101

Technical Solutions

SPYKE clothing cover is made of high-quality breathable polyester and will help you to protect your motorcycle clothing from humidity and dust. The product is washable, durable, and equipped with a large transparent viewing window which helps to easily identify the clothes inside without opening the bag. This cover comes with a durable zipper.

Materials

100% polyester.



MOTORCYCLE COVER

150003

ONE SIZE



DETAILS



COLOR OPTIONS



10101

Special features



Materials

100% polyester PU coating.

Technical Solutions

This heavy duty cover is created to protect your motorcycle from rain, dust, and sunlight. Additionally, it has an anti-thief lock hole which allows you to lock your motorcycle with a chain, cable, or U/D-lock while covered.



SPYKE™
BETTY

PROTECTOR



CE SOFT BACK PROTECTOR (M)

141131/10403/OS

CE SOFT BACK PROTECTOR (L)

141132/10403/OS



CE ELBOW PROTECTOR

141153/10403/OS Man

141157/10403/OS Lady



CE SHOULDER PROTECTOR

141156/10403/OS Man

141155/10403/OS Lady



CE HIP PROTECTOR

141125/10403/OS



TRACK SLIDER

141124/10101/OS

BLACK



ELBOW SLIDER

141126/10102/OS

BLACK/WHITE



ELBOW SLIDER

141126/13101/OS

RED



ELBOW SLIDER

141126/10202/OS

WHITE/GOLD



ELBOW SLIDER

141126/10201/OS

WHITE/BLACK



ELBOW SLIDER

141126/10166/OS FLUOYELLOW/BLACK

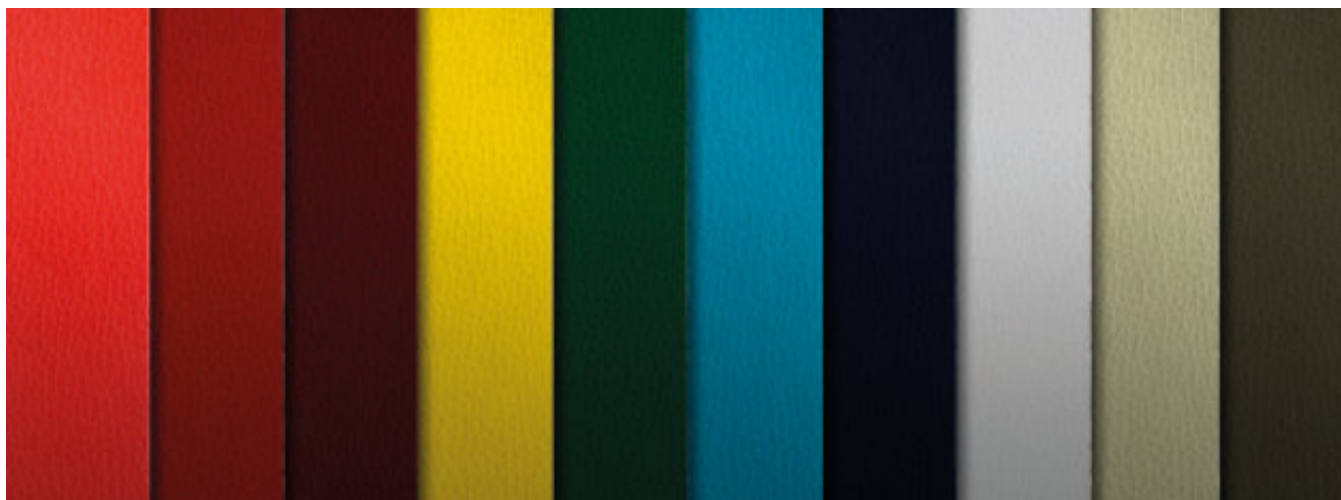
TECH FEATURES

PELLE TECNICA PER USO MOTOCICLISTICO

Uso di pellami lavorati in Italia, con un'importante varietà di gamma, dove la scelta della materia prima nasce dalle performance richieste al capo.

HIGH TECH LEATHER FOR RIDING PURPOSES

Use of leathers treated in Italy, with a wide diversity of range, where the selection of raw materials arises from the performance requested from the garment.



1 - Pelle bovina smerigliata

Morbida, alta resistenza a trazione e strappo, spessore 1,2mm/1,3mm, idrorepellente.

2 - Pelle rinata a pigmento

È la più resistente ed è il pellame più usato nell'abbigliamento racing grazie alla sua versatilità. La superiore resistenza alla luce e al graio è ottenuta tramite l'applicazione di un lm pigmentato di rinizione; la supercie inoltre può essere stampata, anche in rilievo, oppure serigrafata.

3 - Pelle canguro pieno fiore

Rinita, morbida, idrorepellente, dall'aspetto lucente, che consente così di avere dei capi per un uso sportivo agonistico con il miglior rapporto possibile fra performances meccaniche e leggerezza.

4 - Pelle traforata bovina o di canguro

Morbida, con areazione tecnica che permette di localizzare le prese d'aria solo dove è indispensabile, lontano dalle cuciture, garantendo quindi oltre ad un'estetica migliore, anche una maggiore sicurezza in caso di caduta.

5 - Crosta bovina

Resistente per le parti più impegnative, più esposte a contrasto con oggetti esterni, generalmente utilizzata per inserti scamosciati, dalla "mano" vellutata e calda, molto confortevole al tatto.

6 - Pelle bovina e ovina trattata anilina

È quella che ha l'aspetto più naturale, in quanto è priva di qualunque rinizione coprente. Conserva le caratteristiche singolari del manto dell'animale per questo vi è la possibilità di intravedere differenti sfumature di colore. Il pellame lavorato all'anilina viene tinto, ma non è rinito con alcuna pellicola a polimeri o pigmenti. Si applica un sottile strato di lacca trasparente, che ha la funzione di proteggere dalle macchie e conferisce un tono di lucidità.

7 - Pelle vintage

Tipologia di articoli concepiti per avere un look unico e personale grazie ai particolari trattamenti di concia a base di resine ed ingrassi di origine naturale che enfatizzano con l'utilizzo il caratteristico effetto "vissuto".

Gli standard qualitativi garantiscono inoltre elevate solidità dei colori in funzione delle destinazioni d'uso per cui il capo è stato progettato.

1 - Snued cow leather

Soft, high tension and tearing resistance, 1,2mm/1,3mm thick, water repellent.

2 - Pigment nished leather

It is the most resistant and it is the more used leather in racing clothing due to its versatility.

The superior resistance to light and scratches is achieved through the application of a nishing pigmented lm; furthermore, the surface may be printed, also embossed, or silk screen printed.

3 - Full grain kangaroo leather

Rened, soft, water repellent, with a shining appearance, which allows in this way to have racing sports clothing with the best possible balance between mechanical performances and lightness.

4 - Kangaroo or cow perforated leather

Soft, with high tech ventilation allowing to locate the air vents only where indispensable, away from the seams, thus ensuring, further than better looks, also better safety in the event of a fall.

5 - Cow split grain

Resistant for the most stressed parts, the more exposed to the contrast with exterior objects, generally used for suede inserts, having a velvety and warm nish, very comfortable to touch.

6 - Aniline treated cow or sheep leather

It's the one with the most natural appearance, because it has no cover nishing. It keeps the unique features of the coat of the animal, for this reason there is the possibility to glimpse different shades of color.

The leather treated with aniline is dyed, but it is not nished with any polymeric lm or pigment; a thin layer of transparent layer is applied, with the function to protect from stain and to give a touch of shine.

7 - Vintage leather

Type of goods designed to have a unique and personal look thanks to peculiar natural sourced resin and grease based tanning treatments which highlight with the use the specific "worn" effect.

The quality standards guarantee as well high solidity of colors in function of the use destination for which the garment was designed.

TESSUTI TECNICI PER USO MOTOCICLISTICO

I capi Spyke utilizzano tessuti ad alta tenacità con speciali lavorazioni che combinano trame bi elastiche e orditi in lati ritorti. La combinazione e la selezione di speciali bre di poliestere 600D, Cordura, Nylon, Rayon, Lycra, con grande resistenza alla trazione, al taglio, al calore e alla lacerazione e dalla bassissima conducibilità elettrica, dalle eccellenti performance meccaniche che vanno sommate a leggerezza e facilità di manutenzione e pulizia, rendono i capi in tessuto adatti all'uso in condizioni climatiche avverse, anche grazie al trattamento di idrorepellenza, garantendo un'adeguata protezione in caso di scivolata. In caso di pioggia, è sufficiente l'asciugatura dei capi all'aria per permettere di riattivare tutte le caratteristiche di oleo e idrorepellenza dei tessuti.

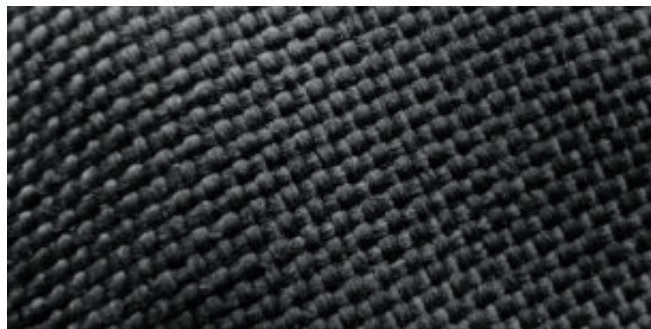
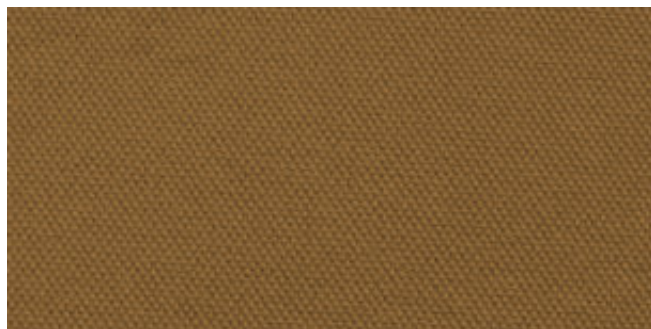


ZIP SPECIALI

I capi tecnici Spyke utilizzano innovative lampo a spirale di Nylon, altamente resistenti agli sbalzi termici e perfettamente adattabili alle curve del corpo. Tenacità, resistenza all'utilizzo e all'usura, adabilità, uidità e precisione di chiusura ne caratterizzano le prestazioni. Le tute racing montano speciali zip a me retardant, in grado di rispondere alle normative in merito alla protezione contro il calore e la fiamma, con un L.O.I. (limit oxygen index) tra 28-30. Nei capi più sportivi e racing si utilizzano le nuove zip con cursore antiottaggio autobloccante.

HIGH TECH FABRICS FOR RIDING PURPOSES

Spyke clothes use high tenacity fabrics with special treatments combining bi-elastic weaves with twisted yarns. The combination and the selection of special 600D polyester, Cordura, Nylon, Rayon, Spandex, having high resistance to traction, cut, heat and tearing with the minimum electric conductivity, having excellent mechanical performances which must be added to lightness and easy maintenance and cleaning, make the fabric clothes suitable to be used under adverse weather conditions, also thanks to the water proofing treatment, guaranteeing an appropriate protection in case of slide. In case of rain, the simple drying of the clothes at the air is enough to reactivate all the oil and water repellence features of the clothes.



SPECIAL ZIPS

Spyke high tech clothes employ innovative Nylon spiral zip closure, having a high resistance to thermal shocks and perfectly adapting to the shapes of the body. Tenacity, resistance to use and wear, reliability, uidity and accuracy of closure characterise their performance. The racing suits are equipped with a me retardant zips, able to meet the rules on the protection against heat and flame with a L.O.I. (limit oxygen index) ranging from 28 to 30. The sportier and racing clothes use the new zips with auto-locking antifloating slider.

ICONS



STRETCH

Special construction technology implies the use of panels in innovative Elastomere combined in weaving with polyamide yarns with high tenacity (x-stretch fabric) to guarantee optimal comfort and thanks to the bi-dimensional elasticity. In the racing suit, the x-stretch fabric is coupled with a leather panel, which, thanks to special gusset seams, stretches lengthwise and in width, allowing the rider agile and comfortable movements.



REMOVABLE LINING

The inner layers can be removed and washed separately to maintain proper hygiene of the garment.



THERMAL

Spyke Thermal clothing offers warmth and comfort without adding weight. Lightness and freedom of movement are the key features of the products with Thermal insulation. Their special paddings grant high resistance and exceptional breathability without absorbing water or humidity. The low heat transmission coefficient allows for retaining temperature heat even better than wool.



REINFORCED THREADS

The seams reinforced with heavy-duty yarns add durability to most abrasion and tension-stressed parts of the garment.



SAFETY SEAMS

Safety seams construction according to EN17092:2020 standard.



LADY FIT

Women's Spyke garments are designed for women who do not want to quit their femininity, not even on two wheels. Thanks to the cut and the lines following feminine shapes, the adjustable velcro straps, the belts to enhance the waistline, and also more comfortable volumes in the breast area, Spyke women's garments give riders a comfortable riding experience and maximum safety without sacrificing modern looks.



SLIM FIT

This icon means that the garment has Italian fitting and will make you look even more fashionable and will emphasize your figure.



DRY TECNO

Dry Tecno is a technology used by Spyke to protect the rider from rain and wind. The polyurethane resin membrane (PU), having a unique structure especially created to be used on the bike, absorbs and drives out sweat but remains waterproof and ensures maximum protection from external elements. The unique construction of the garments with Dry Tecno technology creates a wide dry air volume between the body and a waterproof barrier. It strongly reduces the risk of condensation from excessive sweat and contributes to maintaining the skin temperature (eliminating the heat dispersion through direct conduction of body-lining water).

**AIR TECH**

The AIR products guarantee appropriate ventilation thanks to extended net inserts or breathable perforated leather. Perforated inserts in the zones help transfer the body heat outside.

**AIR STRUCTURE**

Spyke products with this sign have a lining made of 3D mesh fabric. Thanks to this solution, more air circulates around the rider's body, which makes the garment more breathable.

**REFLECTIVE**

Zones with reflective prints for better visibility.

**LAMINATED LAYERS**

Materials with a layered structure. Two or more materials are bonded together with an adhesive to import benefits like added strength, durability, or a combination of properties such as waterproofing and puncture resistance.

**FORCED VENT**

Ventilation system to increase body cooling by improving the evaporation of sweat thereby reducing the psychological strain for the wearer

**ZERO BLACK**

Collection line with full black colour together with nice black prints

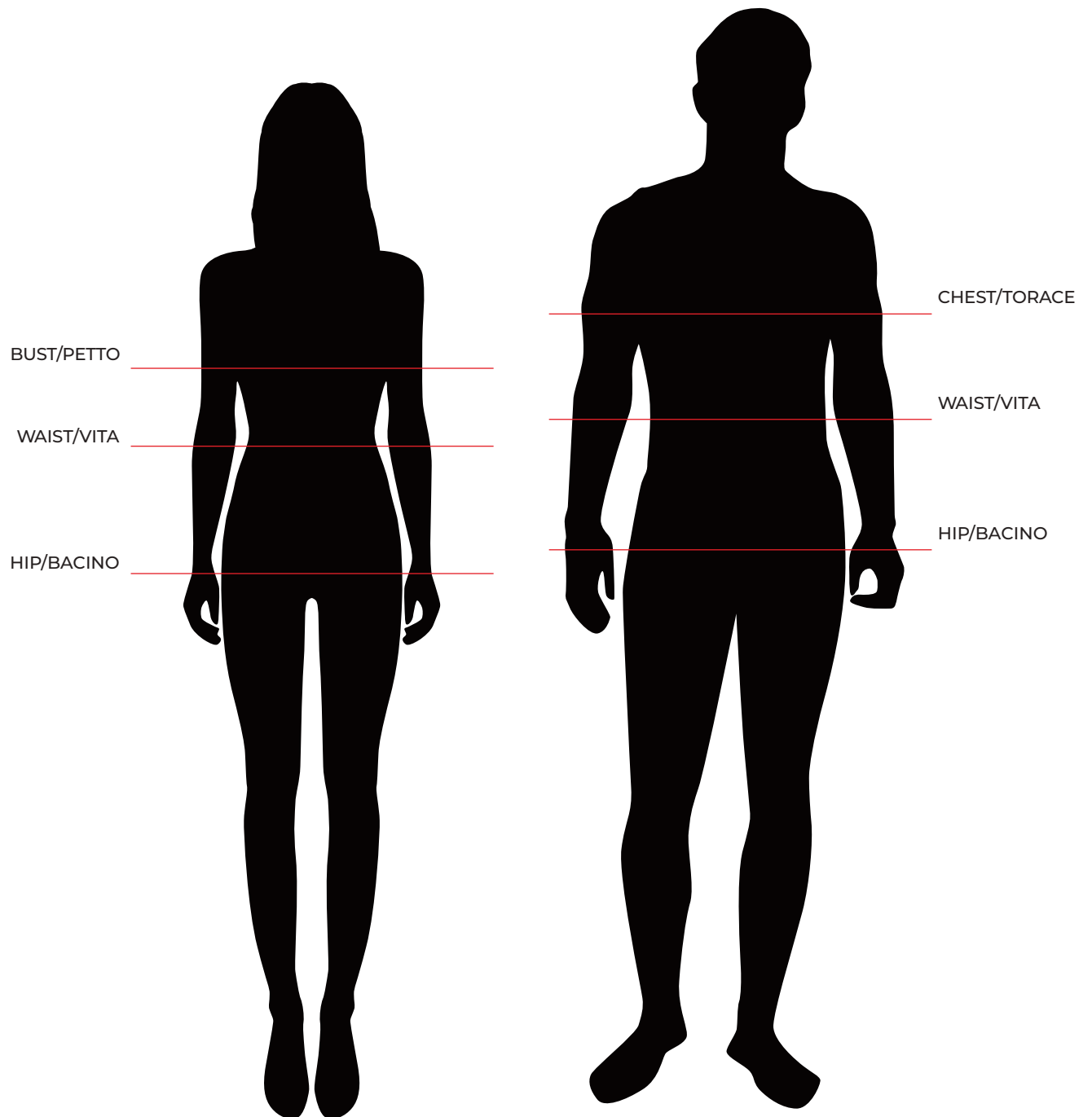
**CE**

CE marking on a product means that it has been submitted to an EU examination assessment in accordance with the requirements in the Regulation (EU) 2016/425 and has been granted a 2nd CAT. PPE (Personal Protective Equipments).

**DAKAR**

Special Dakar collection, Dakar official product.

SIZE CHART



MAN

SIZES/TAGLIE	ITA	46	48	50	52	54	56	58	60	62
	EU	44	46	48	50	52	54	56	58	60
	UK	36	38	40	42	44	46	48	50	52
	USA	36	38	40	42	44	46	48	50	52
	INTERNATIONAL	XS	S	M	L	XL	XXL	3XL	4XL	5XL

FIT/VESTIBILITÀ (cm)	CHEST/TORACE	90-94	94-98	98-102	102-106	106-110	110-114	114-118	118-122	122-126
	WAIST/VITA	80-84	84-88	88-92	92-96	96-100	100-104	104-108	108-112	112-116
	HIP/BACINO	90-94	94-98	98-102	102-106	106-110	110-114	114-118	118-122	122-126
	HEIGHT/ALTEZZA	164-170	167-173	170-176	173-179	176-182	179-185	180-185	181-186	181-186

WOMAN

SIZES/TAGLIE	ITA	38	40	42	44	46	48	50	52	-
	EU	36	38	40	42	44	46	48	50	-
	UK	6	8	10	12	14	16	18	20	-
	USA	4	6	8	10	12	14	16	18	-
	INTERNATIONAL	XS	S	M	M	L	XL	XXL	3XL	-

FIT/VESTIBILITÀ (cm)	BUST/PETTO	78-82	82-86	86-90	90-94	94-98	98-102	102-106	106-110	-
	WAIST/VITA	62-66	66-70	70-74	74-78	78-82	82-86	86-90	90-94	-
	HIP/BACINO	82-86	86-90	90-94	94-98	98-102	102-106	106-110	110-114	-
	HEIGHT/ALTEZZA	152-158	155-161	158-164	161-167	164-170	167-173	169-175	170-176	-

UNISEX

*	ITA	40/44	-	-	48/50	-	-	52/54	-	-
	INTERNATIONAL	XS/S	-	-	M/L	-	-	XL/2XL	-	-

GLOVES

*	INTERNATIONAL	XXS	XS	S	M	L	XL	XXL	-	-
---	---------------	-----	----	---	---	---	----	-----	---	---

:	HAND/MANO	18,2	19,4	20,6	21,8	23	24,2	25,4	-	-
---	-----------	------	------	------	------	----	------	------	---	---

* SIZES/TAGLIE
** FIT/VESTIBILITÀ (cm)

INDEX

119 AERO	142003	27 IMOLA EVO 2.0 LADY	110364
58 AIRMASTER	120620	75 LATITUDE DRY TECNO	131040
59 AIRMASTER LADY	120651	117 LEG BAG	142001
118 AQUA	142002	60 LEVANTE	120652
22 ARAGON EVO	110310	95 LONDON	170610
30 ARAGON GT DRY TECNO	120630	61 LUFT MAN 2.0	120687
9 ARAGON RACE	110102	89 MILANO LADY 2.0	110345
47 ARTICA DRY TECNO	120541	87 MILANO MAN 2.0	110344
62 ARTICA DRY TECNO PANTS	120745	28 MISANO RS	110418
11 ASSEN RACE 2.0	110162	121 MONSOON RAIN JACKET	150000
15 ASSEN SPORT 2.0	110261	122 MONSOON RAIN PANTS	150004
94 BARCELONA	170608	21 MONZA EVO	110312
99 BETTY	160701	124 MOTORCYCLE COVER	150003
101 BIARRITZ	131016	71 NAMIB EXT	120633
100 BIARRITZ DRY TECNO	131018	73 NAMIB EXT PANTS	120743
104 BIARRITZ VENTED 2.0	131019	82 NAMIB GLV	131045
69 BREVA DRY TECNO	120726	92 PARIS	170611
123 CLOTHES COVER	150001	98 RIDER	160700
81 COMMUTER DRY TECNO	131042	50 SAHARA VENTED	120543
55 COMPASS DRY TECNO	120542	63 SAHARA VENTED PANTS	120748
56 COMPASS DRY TECNO LADY	120552	113 SPYKE DKR HOODIE	180404
66 COMPASS DRY TECNO PANTS	120746	112 SPYKE DKR LONG SLEEVE	180303
67 COMPASS DRY TECNO PANTS LADY	120744	111 SPYKE DKR T-SHIRT	180104
52 EQUATOR DRY TECNO	120520	80 STOCKHOLM	131046
53 EQUATOR DRY TECNO LADY	120530	91 SUBURRA	110365
64 EQUATOR DRY TECNO PANTS	120720	37 TECH PRO	130964
65 EQUATOR DRY TECNO PANTS LADY	120730	39 TECH RACE	130965
23 ESTORIL EVO	110320	43 TECH SHORT 2.0	130971
34 ESTORIL GT	120632	41 TECH SPORT LADY 2.0	130970
33 ESTORIL GT DRY TECNO	120631	40 TECH SPORT VENTED 2.0	130969
14 ESTORIL RACE	110156	77 TOURING 2 DRY TECNO LADY	131036
16 ESTORIL SPORT	110252	76 TOURING 2 DRY TECNO MAN	131032
109 HIKER	120623	120 URBEX	142004
26 IMOLA EVO 2.0	110363	114 VALVE DKR HEAT	120622

The logo for Spyke Technology, featuring the word "SPYKE" in a bold, italicized, sans-serif font. The letters are white with a black outline, and a small trademark symbol (TM) is located at the end of the word.

All products and their related technical data, as well as illustrations, advice and information available through this catalogue are provided on an "as it is, as available" basis without warranties of any kind, either expressed or implied. Such information is updated as of the print date and has a mere indicative value and is not binding for Spyke Technology. Spyke Technology will not be liable for any mistakes in printing and/or translation. This catalogue may be accessed by users internationally and may contain references to products that are not available and/or whose features may vary in accordance with local laws. Not all colors and/or versions are available in all countries. Spyke Technology reserves the right to make changes and improvements to any product without any obligation to give prior notice or to carry out such changes to products already sold. Product delivery time varies depending on product availability, production schedule and when the order is placed. Further product specifications are indicated on the packaging or attached on the product itself. Technical apparel usage does not eliminate risk of injury during an accident. Please be careful while driving. Reproduction rights of the photographs represented in this catalogue belong to Spyke Technology. Any reproduction of these photographs without the explicit permission of the latter is strictly prohibited.

Copyright 2018 Spyke Technology.

* Product specifications are subject to change without notice.

SPYKE INTERNATIONAL

Piazza della Vittoria 3
36065 Mussolente (VI)
Italia - Italy

Mail: contact@spyke.it
Web: spyke.it

facebook.com/spyke.social

